

\$815,000

mikegreerhomes

Cromwell

Lot 256 Wooing Tree Estate Central Otago District



for sale

dwelling size	section size
120 m ²	252 m ²

homes
for
sale

Offering 3 bedrooms and an open plan living, kitchen and dining area, this home is perfectly designed to maximise space and indoor/outdoor flow. The home features an internal access garage and private section perfect for entertaining. Complementing the living and bedroom spaces are the family bathroom and toilet, both are well-appointed with quality fixtures and fittings.

Fringed by vines, this new development will retain and celebrate its unique location, with pride of place reserved for the iconic Wooing Tree. The vineyard and its cellar door will remain a key focus of the development, the beating heart of the wonderful new neighbourhood. The development will also be supported by carefully selected hospitality and retail businesses that will promote the local wine and tourism industry.

more features.

- ✦ After Sales Care Program
- ✦ Personal Colour Consultation
- ✦ Driveway and Patios Included
- ✦ Open Plan Living
- ✦ Smeg Appliances
- ✦ Study Nook
- ✦ Walk in Pantry

Home and Land Package

A Home and Land Package is a section and home combination with finance options available.

Special T&C's apply to this package.

bringing you **more**

03 443 2065

mikegreerhomes.co.nz


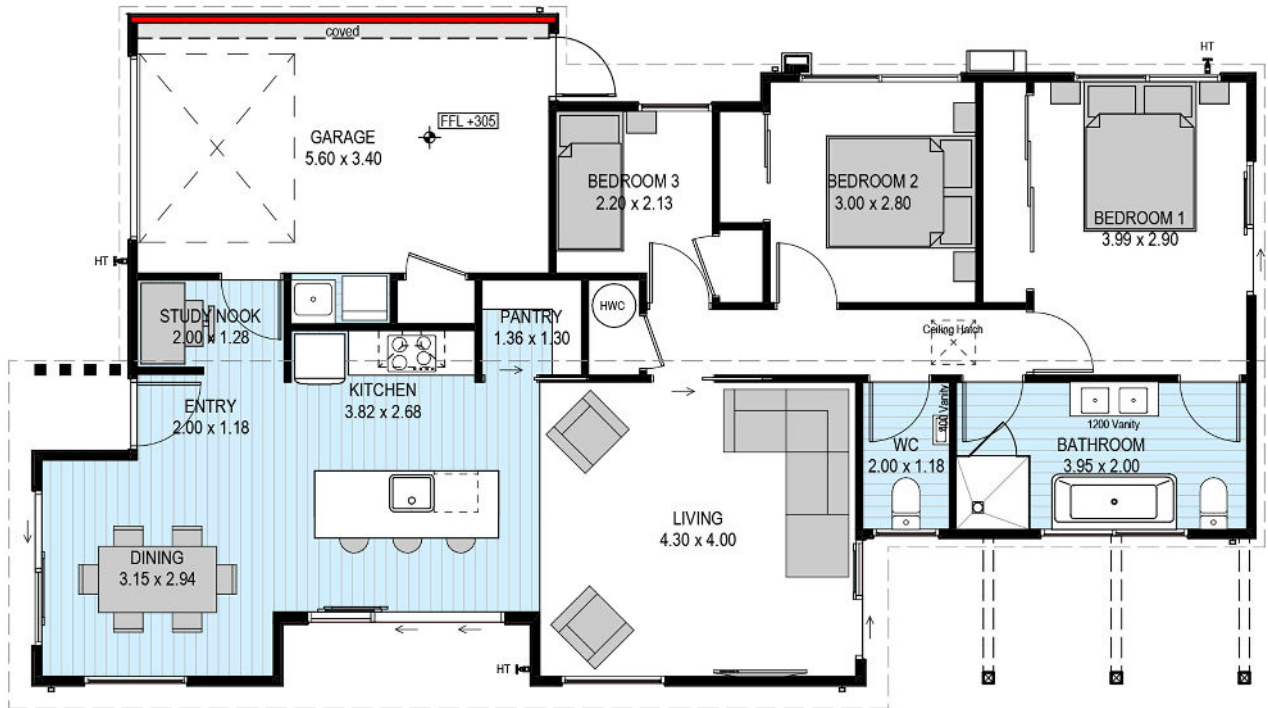
Wooring Tree Estate Lot 256 Wooring Tree Estate Central Otago District

WN0828

dwelling size | section size

120 m² | 252 m²

3 2 1 2 1

After Sales Care

At Mike Greer Homes we are committed to making the build journey as stress-free as possible. Our After Sales Care programme addresses any maintenance issues and ensures that any remedial work is undertaken once it is logged and approved.

Disclaimer. While every reasonable effort has been made by Mike Greer Homes to ensure the information correctly illustrates the dwelling and section, this material may only be used by the Purchaser for illustrative and guidance purposes. Mike Greer Homes accepts no responsibility for any differences, errors or omissions which may become apparent during or on completion of the dwelling.

