

# \$722,000

# mikegreerhomes

## Cromwell

Lot 430 Wooing Tree Estate Central Otago District



# for sale

dwelling size | section size  
69 m<sup>2</sup> | 264 m<sup>2</sup>

homes  
for  
sale

This 2 bedroom home is perfect for couples, retirees and investors. Perfectly designed for the site, the home features an open plan living and kitchen area that connects well to the outdoor space. The main bathroom is well appointed with a shower and toilet. With neutral decor and quality fixtures and fittings throughout, and a great location close to schools and amenities, this home really presents good value for money.

Fringed by vines, this new development will retain and celebrate its unique location, with pride of place reserved for the iconic Wooing Tree. The vineyard and its cellar door will remain a key focus of the development, the beating heart of the wonderful new neighbourhood. The development will also be supported by carefully selected hospitality and retail businesses that will promote the local wine and tourism industry.

### more features.

- ✦ 10 Year Registered Master Build Guarantee
- ✦ Open Plan Living
- ✦ Smeg Appliances
- ✦ Dulux Wash And Wear Paint



A Turn Key home is an all-inclusive package that only requires 10% deposit.




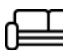

bringing you **more**

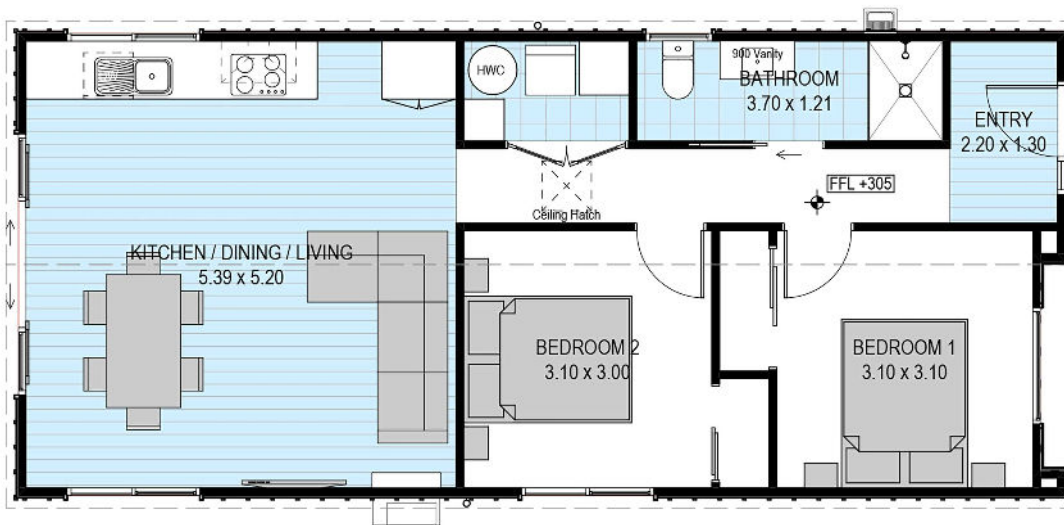
03 443 2065

[mikegreerhomes.co.nz](http://mikegreerhomes.co.nz)

Wooring Tree Estate Lot 430 Wooring Tree Estate Central Otago District

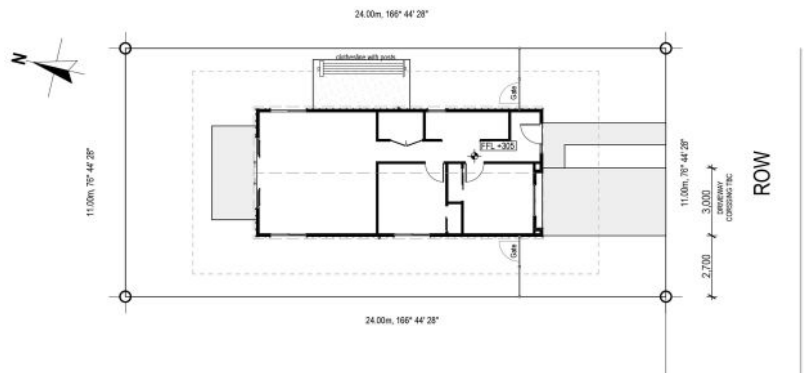
WN0868

dwelling size	section size	2	1	1	1	0
69 m <sup>2</sup>	264 m <sup>2</sup>					



**After Sales Care**

At Mike Greer Homes we are committed to making the build journey as stress-free as possible. Our After Sales Care programme addresses any maintenance issues and ensures that any remedial work is undertaken once it is logged and approved.



Disclaimer. While every reasonable effort has been made by Mike Greer Homes to ensure the information correctly illustrates the dwelling and section, this material may only be used by the Purchaser for illustrative and guidance purposes. Mike Greer Homes accepts no responsibility for any differences, errors or omissions which may become apparent during or on completion of the dwelling.