



Central
Living Series

WOONG TREE ESTATE

New Zealand | Sotheby's
INTERNATIONAL REALTY



Central Living Series

Welcome to the Central Living Series, where the vision for a master-planned community is brought to life through elegant design and unparalleled convenience. Nestled amidst Cromwell's scenic vineyards, each residence is designed to harmonise with the natural beauty of the area, providing easy access to key amenities including the Wooing Tree Cellar Door + Kitchen and BestStart Childcare Centre.

Purchase off-plan, a brand new affordable standalone freehold property in Cromwell's Wooing Tree Estate. These modern turn-key homes are a must view for downsizers, first time homeowners or investors.

Location: Wooing Tree Estate, Cromwell

Tenure: Freehold

Builder: Barrett Homes

Price: \$859,000 incl. GST



Floor Area: 110 sq m

Land Area: 210 sq m

Location



CROMWELL



Central Stage Masterplan





The Central Stage is designed with greenways and cycle links that enhance accessibility. These features not only connect you seamlessly to the rest of the neighbourhood but also provide a safe and scenic route for leisure and commuting, right at your doorstep.

- Freehold Sites
- Standalone houses
- Dual street frontage
- Off Street & Visitor parking
- Greenway Living
- Master planned precinct
- Turnkey Packages

Discover Refined Living

These three bedroom homes are crafted for contemporary living, blending comfort with sophistication to offer an exceptional living experience. Central Living Series is an ideal choice for those seeking a refined lifestyle in a thoughtfully planned community.

Whether you are in the market for a lock-and-leave property, a home with potential for rental income, or looking to make your first step onto the property ladder, the Central Living Series has options to suit your preference.

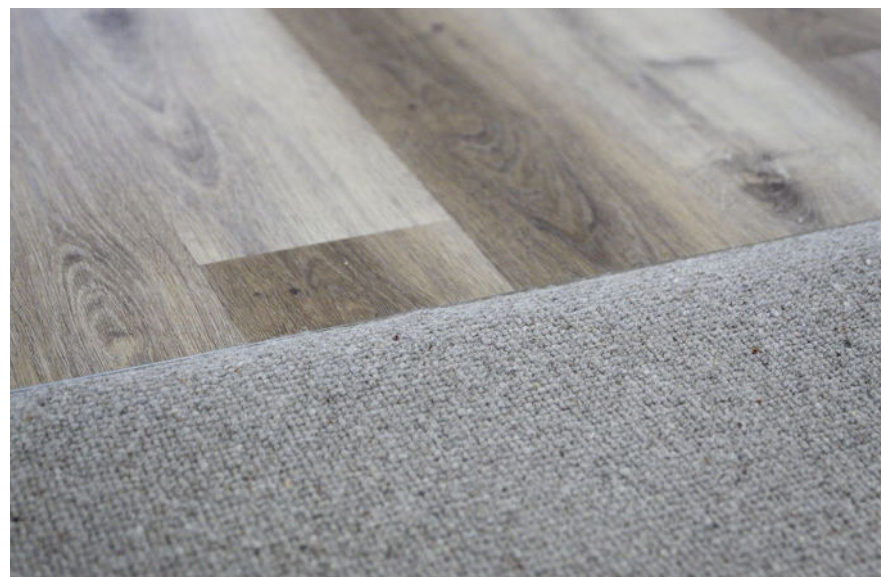
*Standalone, Freehold
Three Bedroom House
& Land Packages*



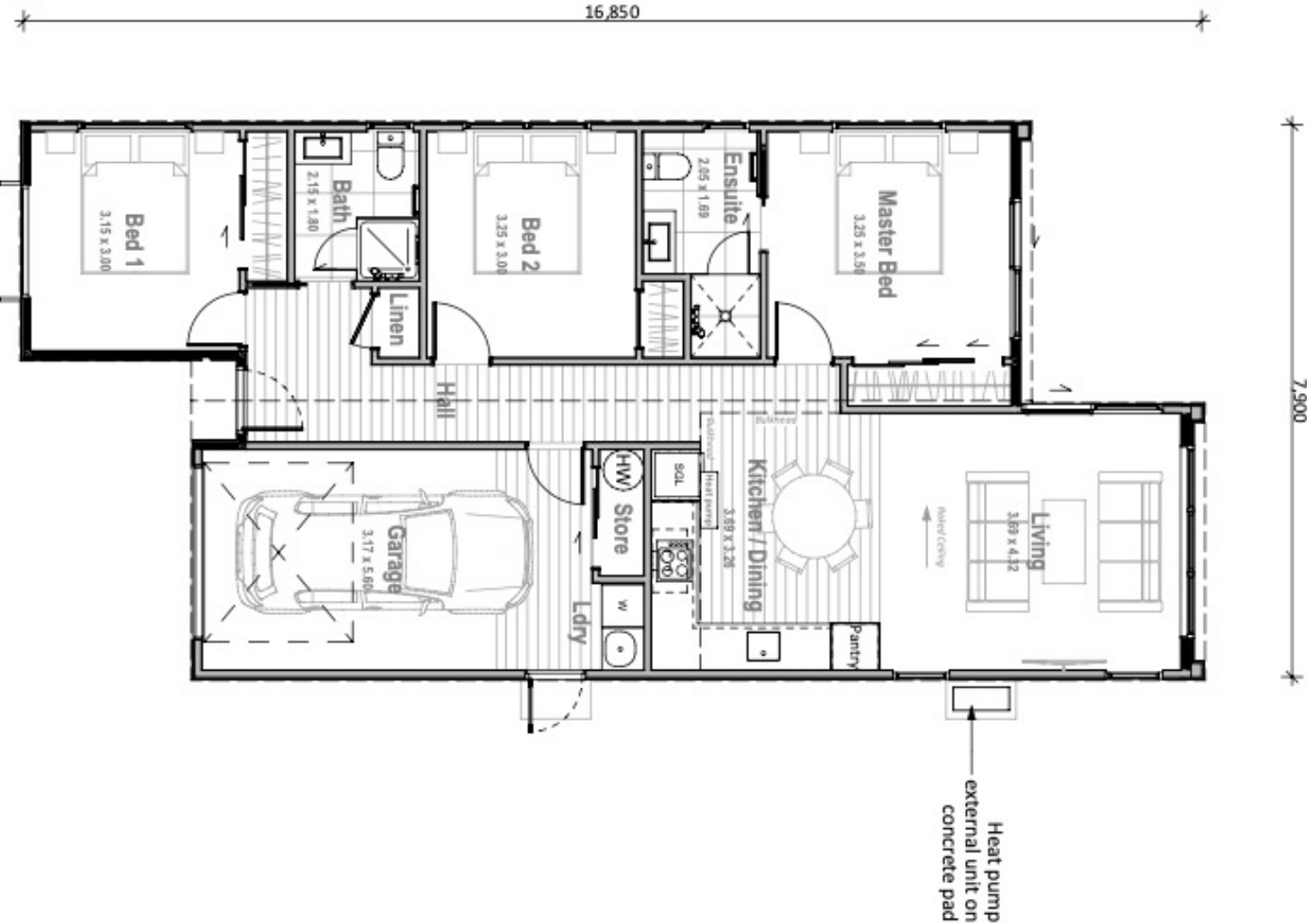


Lush vines border this new development and are also integrated into its design, with the iconic Wooing Tree which stands as the central element in the community. The vines and Cellar Door form the vibrant heart of this thriving new neighbourhood, promising a unique lifestyle centred around wine country living.

Experience the ease of a house and land package—everything you need is available right here. Reach out to Justine Burke or Ben Terry today to schedule a viewing or to obtain further information.



Floor Plans



Architecturally designed, these three bedroom, two bathroom homes provide an affordable option for:

- First home buyer
- Investors
- Holiday home buyers
- Down-sizers

Modern construction offers easy care and warm homes set on standalone fenced sites with north facing courtyards. A detailed schedule of specifications and turn-key options are available upon request.



Materials & Specifications

EXTERIOR

- Maxraft insulated concrete slab
- Vertical Cedar Weatherboard
- James Hardie Axion cladding panel
- PCC Zinacore Roofing – Trapezoidal profile
- Decorative Cedar Screen to entry
- Vantage APL residential series double glazing
- Insulated Garage door
- Exposed aggregate driveway, patio & pavers
- Wooden fencing & gate
- Landscaping
- Letterbox
- Clothesline



INTERIOR HIGHLIGHTS

- Gib plasterboard lining
- Blinds & Curtains
- Tiled shower walls (x3)
- Tiled Kitchen splash back
- Carpet to bedrooms & lounge
- Garage carpet
- Vinyl planking to entry, hall, kitchen, dining & laundry
- LED lights
- F&P Cooktop
- F&P pyrolytic self-cleaning oven
- Waste disposal
- F&P Dish drawer
- Robinhood Rangehood
- Laundry Tub
- Hot water cylinder
- Mitsubishi Hypercore 6kw heatpump







About Barrett Homes

In the 9 years since Dee Copeland, Jase Williams, and their business partners established Barrett Homes Central Otago—a satellite location to four other regions across the country—this boutique design and build company has risen to rank as the number one residential builder in the Central Otago region.

Backed by a loyal team of local subbies and suppliers, Dee, Jase and their extended family all enjoy living in the Wooing Tree Estate, where Barrett Homes is one of the preferred builders. They have extensive experience in the estate's design guidelines, they've completed and are currently constructing over 84 homes in the subdivision.

As a New Zealand-owned company, free from the constraints of franchise fees, Barrett Homes offers more value than most competitors. High quality fixtures and fittings, tiled showers, and curtains and blinds and full landscaping and more... all backed by a fixed price promise.

They have a strong commitment to exceptional quality and world-class systems, your needs are always their priority.

Visit the brand-new show home opening on November 25th at 43 Vintage Street to experience their work first-hand.



Justine Burke and Ben Terry

SALES ASSOCIATES

Ben and Justine have formed a dynamic team, leveraging their extensive individual experiences to offer unparalleled service in the Queenstown and Central Otago real estate market.

Ben brings over a decade of successful residential property sales to the table. A passionate Jacks Point local, he has deep roots in the Southern Lakes area and a broad skill set encompassing large-scale developments, land, commercial properties, construction, off-plan sales, and specialized residential skills. His strategic and outcome-oriented approach is complemented by his expertise in digital marketing, ensuring that properties receive maximum exposure.

Justine, on the other hand, contributes her decade of high-end construction sales experience to the team. Having relocated to Queenstown 19 years ago and now settled in Bannockburn, she possesses extensive knowledge of the Queenstown and Central Otago market. Her accolades, include being the top salesperson for Landmark Homes in 2017 and the top sales team for David Reid Homes 2019 - 2021, and winning Rookie of the Year 2023 nationally for New Zealand Sotheby's International Realty which reflects her excellence in managing high-end builds, projects and residential property sales.

Together, Ben and Justine provide a comprehensive and cohesive approach to real estate. Their combined expertise spans the full spectrum of property sales, from high-end construction to residential and commercial properties. Their shared commitment to trust, honesty, integrity, and excellence in client service has created a synergy that benefits every transaction they undertake.

If you are looking for a team that brings together proven success, deep market knowledge, and a client-focused approach, Ben and Justine are ready to deliver outstanding results.





Central Living Series

WOONG TREE ESTATE

Justine Burke and Ben Terry

+64 22 096 1621
justine.burke@nzsir.com

+64 21 994 392
ben.terry@nzsir.com

Please note some images are renders.
Each Office is Independently Owned and Operated. Browns Real Estate Limited (licensed under the REAA 2008) MREINZ.